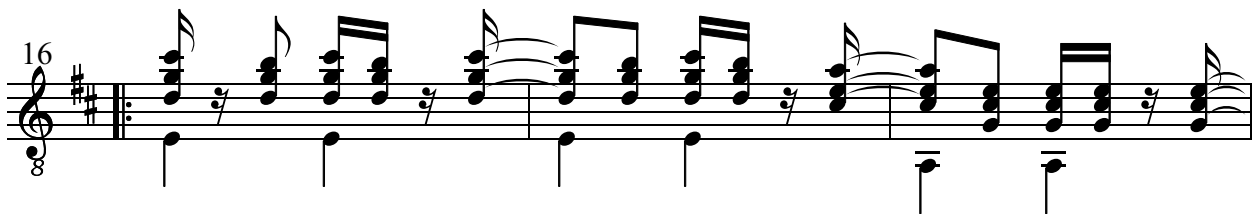
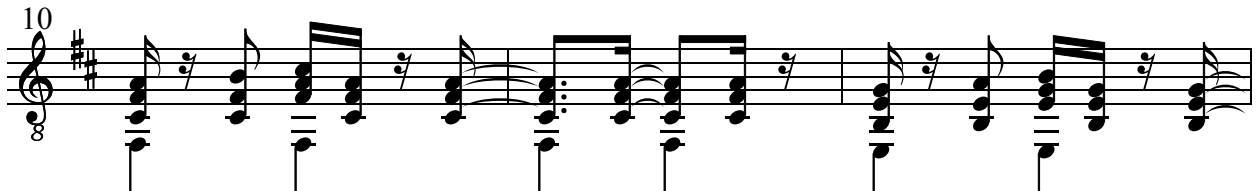
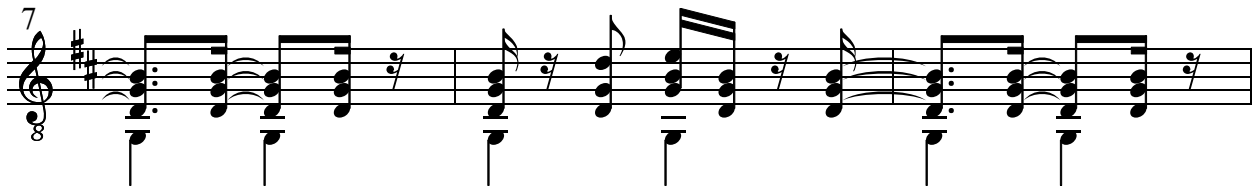
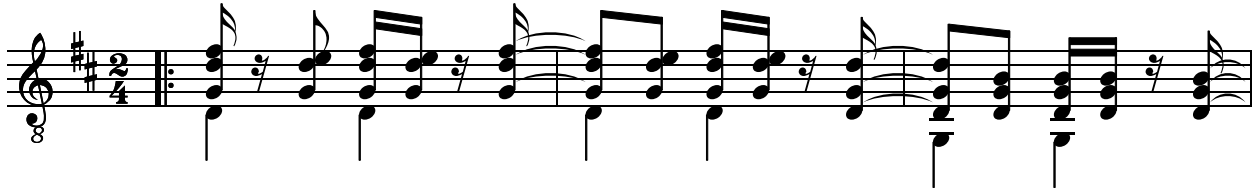


Samba S

(Opus 142)

Thomas Gundlach
(Berlin, 2005)

Andante



19

Measures 19-21: Treble clef, key signature of one sharp (F#), 8/8 time signature. The melody consists of eighth notes and quarter notes with various articulations like slurs and accents. The bass line features a steady eighth-note accompaniment.

22

Measures 22-24: Treble clef, key signature of one sharp (F#), 8/8 time signature. The melody continues with eighth and quarter notes. The bass line maintains the eighth-note accompaniment.

25

Measures 25-27: Treble clef, key signature of one sharp (F#), 8/8 time signature. The melody continues with eighth and quarter notes. The bass line maintains the eighth-note accompaniment.

28

Measures 28-30: Treble clef, key signature of one sharp (F#), 8/8 time signature. The melody continues with eighth and quarter notes. The bass line maintains the eighth-note accompaniment.

31

Measure 31: Treble clef, key signature of one sharp (F#), 8/8 time signature. The melody concludes with a final chord. The bass line maintains the eighth-note accompaniment. The piece ends with the instruction *DC.*