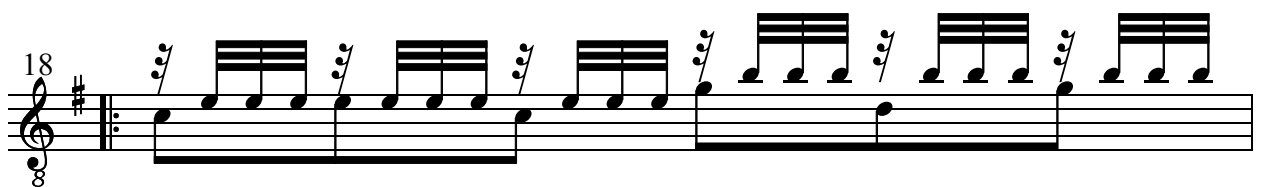
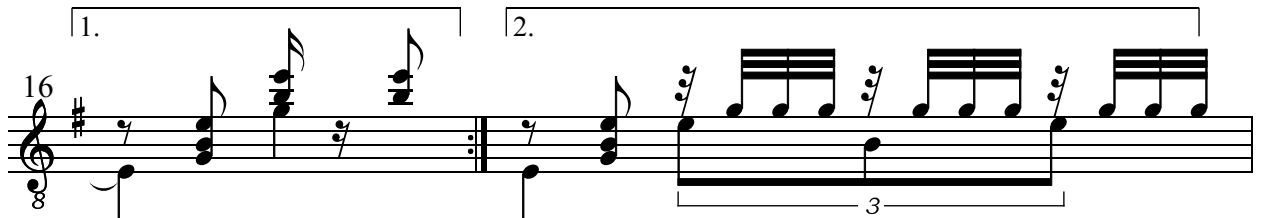
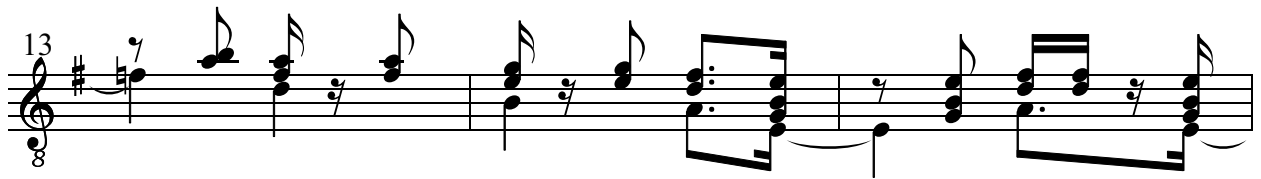
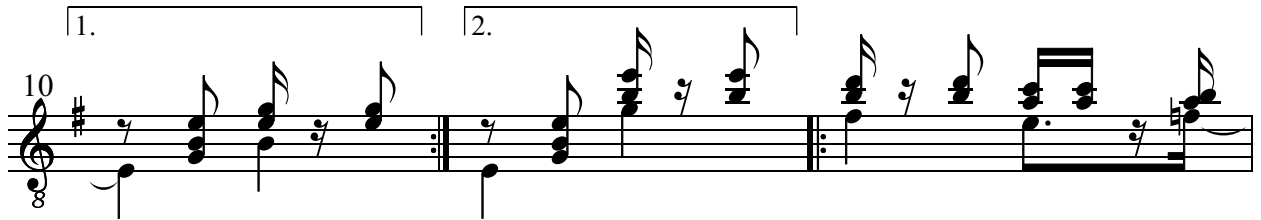
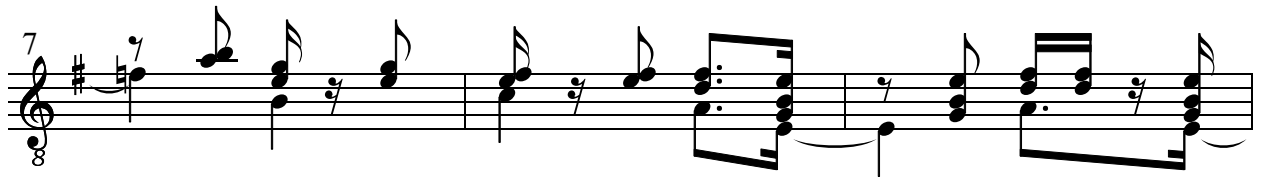


# für einen melancholischen Hund

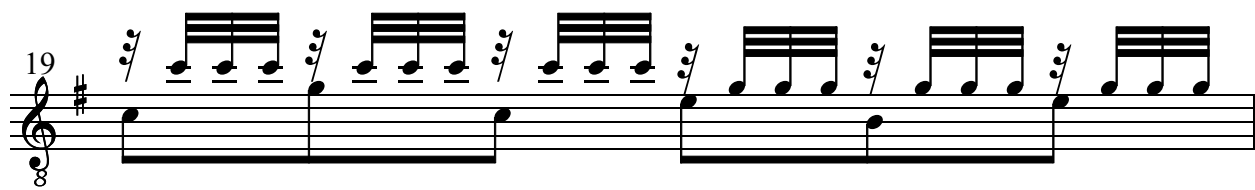
(Opus 33)

Thomas Gundlach  
(Berlin, 1986)

Adagio

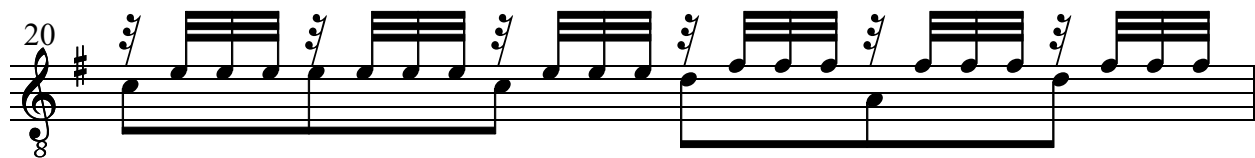


19



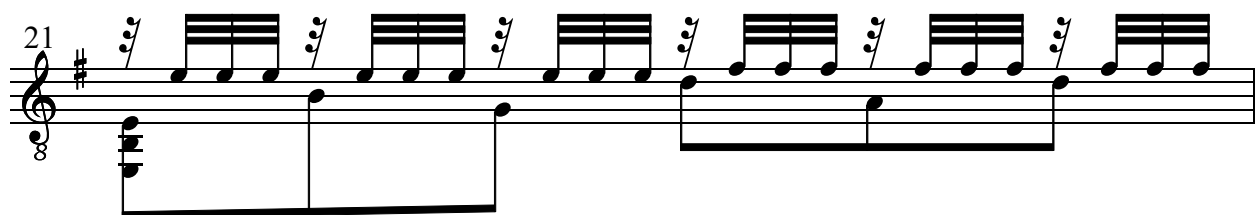
Musical notation for measure 19, featuring a treble clef, a key signature of one sharp (F#), and a common time signature (C). The melody consists of eighth-note triplets on the upper staff, while the lower staff provides a bass line with quarter notes.

20



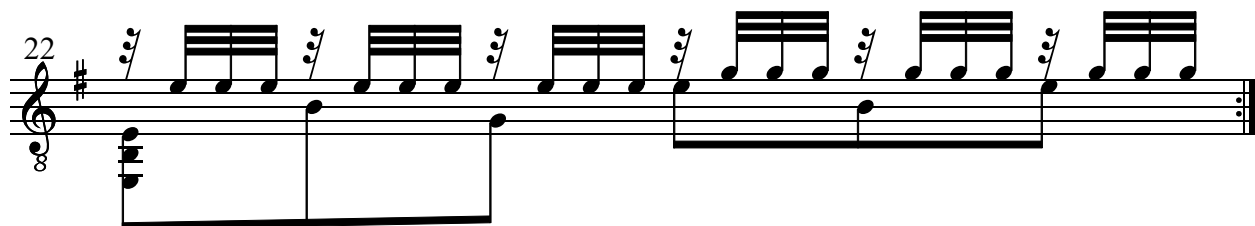
Musical notation for measure 20, continuing the pattern of eighth-note triplets in the upper staff and a bass line in the lower staff.

21



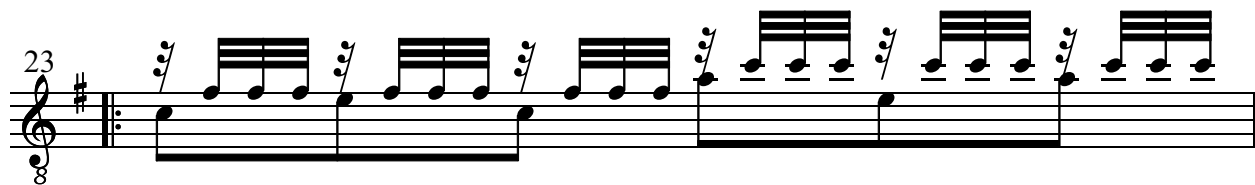
Musical notation for measure 21, featuring eighth-note triplets in the upper staff and a bass line in the lower staff.

22



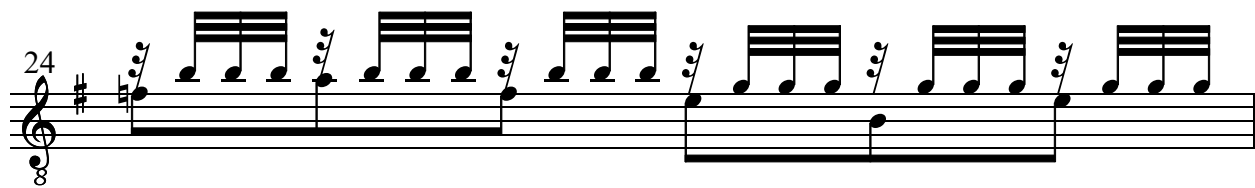
Musical notation for measure 22, featuring eighth-note triplets in the upper staff and a bass line in the lower staff.

23



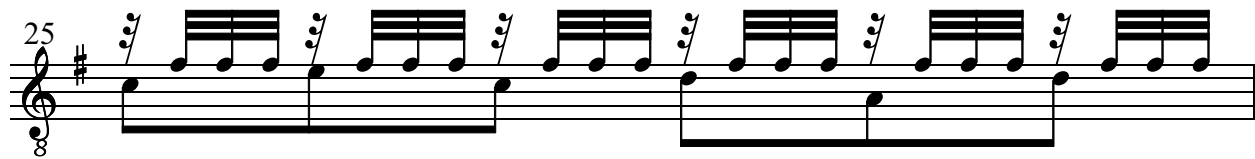
Musical notation for measure 23, featuring eighth-note triplets in the upper staff and a bass line in the lower staff.

24



Musical notation for measure 24, featuring eighth-note triplets in the upper staff and a bass line in the lower staff.

25



Musical notation for measure 25, featuring eighth-note triplets in the upper staff and a bass line in the lower staff.

26

Musical notation for measure 26, featuring a treble clef, a key signature of one sharp (F#), and a common time signature (C). The melody consists of eighth notes with stems pointing up, grouped in pairs. The bass line consists of quarter notes.

27

Musical notation for measure 27, featuring a treble clef, a key signature of one sharp (F#), and a common time signature (C). The melody consists of eighth notes with stems pointing up, grouped in pairs. The bass line consists of quarter notes. A first ending bracket is present above the measure.

28

Musical notation for measure 28, featuring a treble clef, a key signature of one sharp (F#), and a common time signature (C). The melody consists of eighth notes with stems pointing up, grouped in pairs. The bass line consists of quarter notes. A second ending bracket is present above the measure.

29

Musical notation for measure 29, featuring a treble clef, a key signature of one sharp (F#), and a common time signature (C). The melody consists of eighth notes with stems pointing up, grouped in pairs. The bass line consists of quarter notes. A repeat sign is present at the beginning of the measure.

30

Musical notation for measure 30, featuring a treble clef, a key signature of one sharp (F#), and a common time signature (C). The melody consists of eighth notes with stems pointing up, grouped in pairs. The bass line consists of quarter notes. A key signature change to two sharps (F# and C#) is indicated by a sharp sign on the C line.

31

Musical notation for measure 31, featuring a treble clef, a key signature of one sharp (F#), and a common time signature (C). The melody consists of eighth notes with stems pointing up, grouped in pairs. The bass line consists of quarter notes.

32

Musical notation for measure 32, featuring a treble clef, a key signature of two sharps (F# and C#), and a common time signature (C). The melody consists of eighth notes with stems pointing up, grouped in pairs. The bass line consists of quarter notes.

1.

33

This system shows measure 33. The treble clef has a key signature of one sharp (F#) and a common time signature (C). The melody consists of eighth-note triplets: F#4, G4, A4; B4, C5, D5; E5, F#5, G5; and A5, B5, C6. The bass clef has an 8va marking and contains a whole note chord of F#3, A3, and C4.

2.

34

This system shows measure 34. The treble clef has a key signature of one sharp (F#) and a common time signature (C). The melody consists of eighth-note triplets: F#4, G4, A4; B4, C5, D5; E5, F#5, G5; and A5, B5, C6. The bass clef has an 8va marking and contains a whole note chord of F#3, A3, and C4.

35

This system shows measure 35. The treble clef has a key signature of one sharp (F#) and a common time signature (C). The melody consists of eighth-note triplets: F#4, G4, A4; B4, C5, D5; E5, F#5, G5; and A5, B5, C6. The bass clef has an 8va marking and contains a whole note chord of F#3, A3, and C4.

36

This system shows measure 36. The treble clef has a key signature of one sharp (F#) and a common time signature (C). The melody consists of eighth-note triplets: F#4, G4, A4; B4, C5, D5; E5, F#5, G5; and A5, B5, C6. The bass clef has an 8va marking and contains a whole note chord of F#3, A3, and C4.

37

This system shows measure 37. The treble clef has a key signature of one sharp (F#) and a common time signature (C). The melody consists of eighth-note triplets: F#4, G4, A4; B4, C5, D5; E5, F#5, G5; and A5, B5, C6. The bass clef has an 8va marking and contains a whole note chord of F#3, A3, and C4.

38

This system shows measure 38. The treble clef has a key signature of one sharp (F#) and a common time signature (C). The melody consists of eighth-note triplets: F#4, G4, A4; B4, C5, D5; E5, F#5, G5; and A5, B5, C6. The bass clef has an 8va marking and contains a whole note chord of F#3, A3, and C4.

1.

39

This system shows measure 39. The treble clef has a key signature of one sharp (F#) and a common time signature (C). The melody consists of eighth-note triplets: F#4, G4, A4; B4, C5, D5; E5, F#5, G5; and A5, B5, C6. The bass clef has an 8va marking and contains a whole note chord of F#3, A3, and C4.

40

2.

40

8

40

8