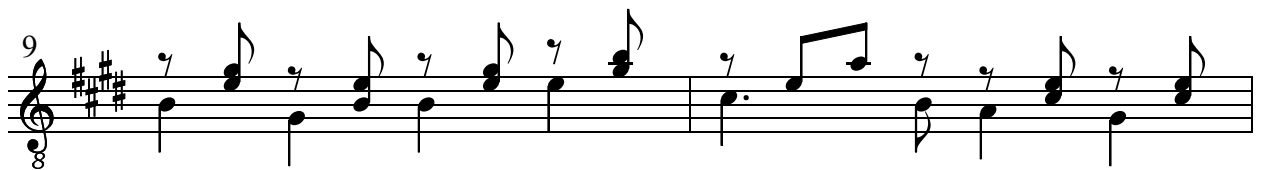


so scheiden wir mit Sang und Klang

(mündlich überliefert)

Arrangement:
Thomas Gundlach

Allegretto



15

1.

Detailed description: This block contains the first staff of music, measures 15 and 16. The key signature is three sharps (F#, C#, G#) and the time signature is 8/8. Measure 15 starts with a treble clef and a common time signature 'C' with an '8' below it. The melody begins with a quarter rest, followed by quarter notes G4, A4, and B4. The bass line consists of quarter notes F#3, G3, and A3. Measure 16 continues the melody with quarter notes C5, B4, and A4, followed by a quarter rest. The bass line has a half note F#3. A first ending bracket labeled '1.' spans the final two measures of the staff.

17

2.

Detailed description: This block contains the second staff of music, measures 17 and 18. The key signature and time signature remain the same. Measure 17 starts with a treble clef and a common time signature 'C' with an '8' below it. The melody begins with a quarter rest, followed by quarter notes G4, A4, and B4. The bass line consists of quarter notes F#3, G3, and A3. Measure 18 continues the melody with quarter notes C5, B4, and A4, followed by a quarter rest. The bass line has a half note F#3. A second ending bracket labeled '2.' spans the final two measures of the staff.

so scheiden wir mit Sang und Klang

(Heinrich Hoffmann von Fallersleben)

|: So scheiden wir mit Sang und Klang,
Leb wohl, du schöner Wald, :|
Mit deinen kühlen Schatten,
Mit deinen grünen Matten,
|: Du süßer Aufenthalt. :|

|: Wir singen auf dem Heimweg noch
Ein Lied der Dankbarkeit: :|
Lad ein wie heut' uns wieder
Auf Laubesduft und Lieder
|: Zur schönen Maienzeit. :|

|: Schaut hin, von fern noch hört 's der Wald
In seiner Abendruh', :|
Die Wipfel möcht' er neigen,
Er rauschet mit den Zweigen,
|: Leb wohl, ruft er uns zu. :|