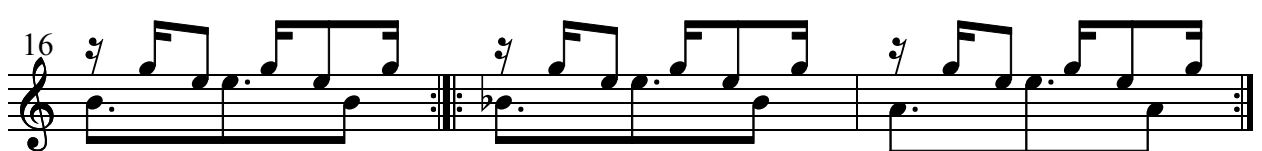
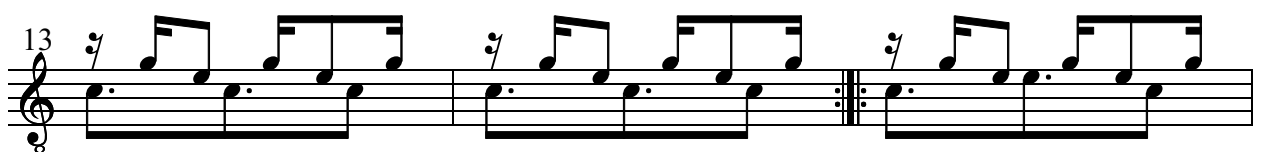
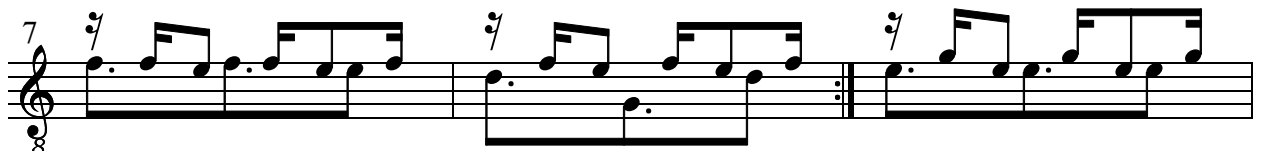


Cavaquinho Nr. 4

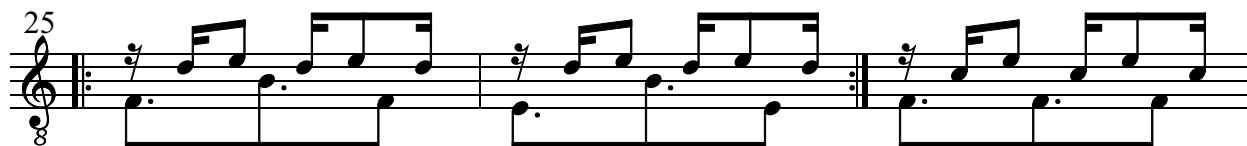
(Opus 103)

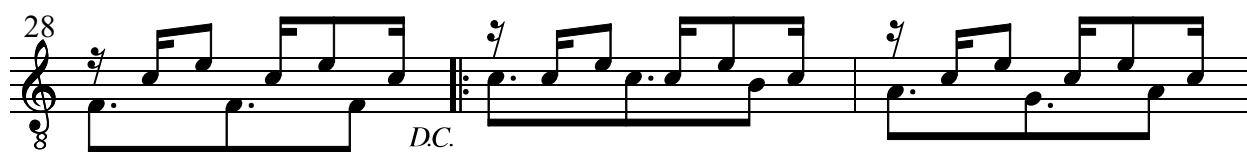
Thomas Gundlach
(Berlin, 1995)

Andante




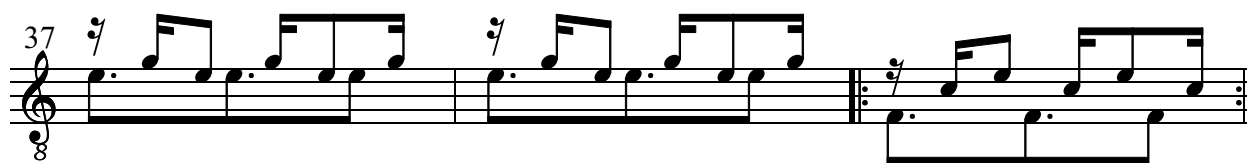
22  Musical notation for measures 22-24. The staff is in treble clef with a common time signature. It features a sequence of eighth notes and quarter notes, with repeat signs and first/second endings. A fermata is placed over the final note of the first ending.

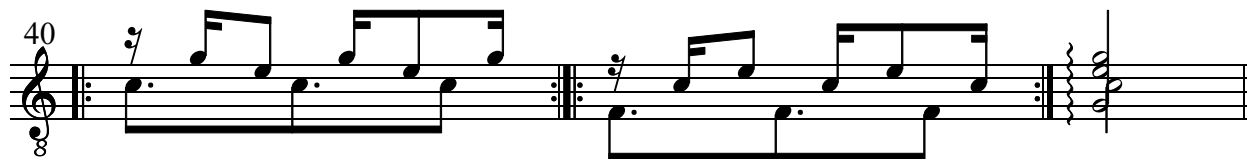
25  Musical notation for measures 25-27. The staff is in treble clef with a common time signature. It features a sequence of eighth notes and quarter notes, with repeat signs and first/second endings. A fermata is placed over the final note of the first ending.

28  Musical notation for measures 28-30. The staff is in treble clef with a common time signature. It features a sequence of eighth notes and quarter notes, with repeat signs and first/second endings. A fermata is placed over the final note of the first ending. The marking *DC.* is present below the staff.

31  Musical notation for measures 31-33. The staff is in treble clef with a common time signature. It features a sequence of eighth notes and quarter notes, with repeat signs and first/second endings. A fermata is placed over the final note of the first ending.

34  Musical notation for measures 34-36. The staff is in treble clef with a common time signature. It features a sequence of eighth notes and quarter notes, with repeat signs and first/second endings. A fermata is placed over the final note of the first ending.

37  Musical notation for measures 37-39. The staff is in treble clef with a common time signature. It features a sequence of eighth notes and quarter notes, with repeat signs and first/second endings. A fermata is placed over the final note of the first ending.

40  Musical notation for measures 40-42. The staff is in treble clef with a common time signature. It features a sequence of eighth notes and quarter notes, with repeat signs and first/second endings. A fermata is placed over the final note of the first ending.