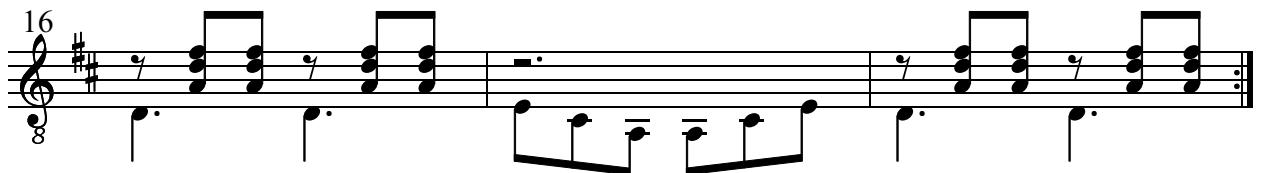
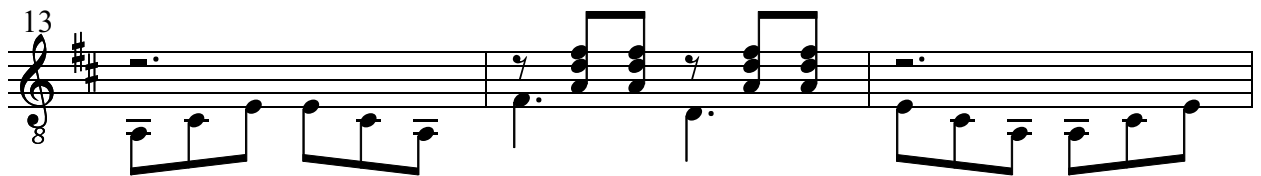
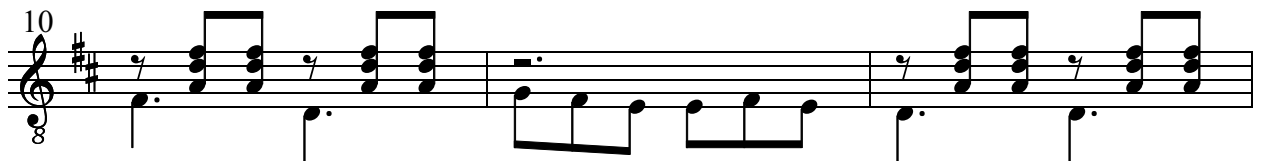
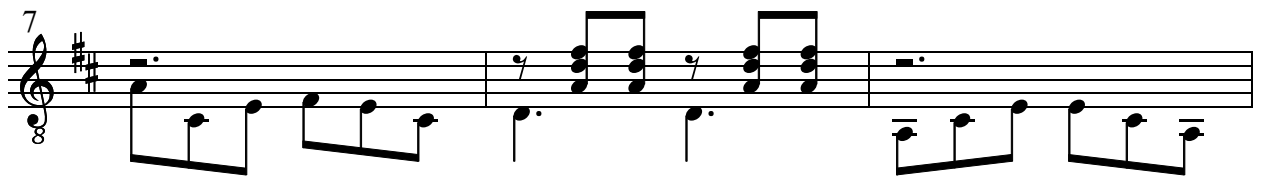
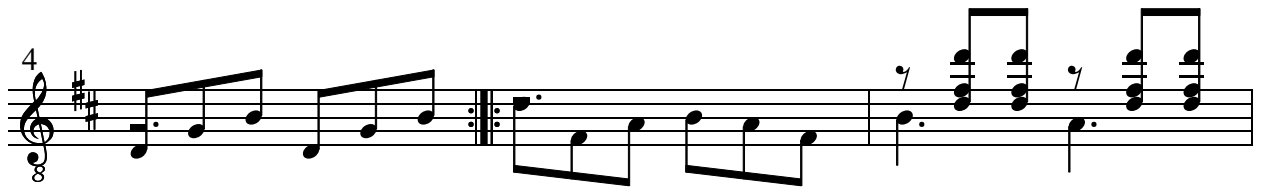


Waldlied

(Opus 136)

Thomas Gundlach
(Berlin, 2004)

♩. = 80



19

8

22

8

25

8

28

8

31

8

34

8

DC.

37

8

40

Musical notation for measure 40, featuring a treble clef, a key signature of one sharp (F#), and a common time signature (C). The melody consists of eighth notes: F#4, G4, A4, B4, C5, B4, A4, G4, F#4. The bass line consists of dotted half notes: F#3, G3, A3, B3, C4, B3, A3, G3, F#3. The measure ends with a double bar line.