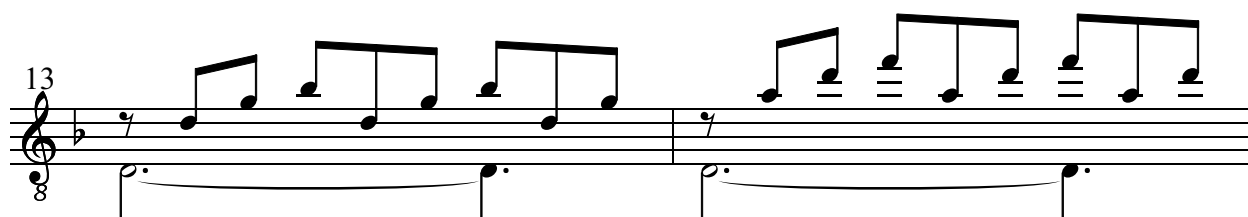
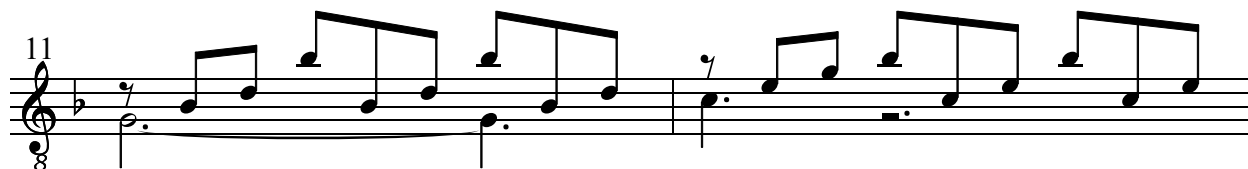
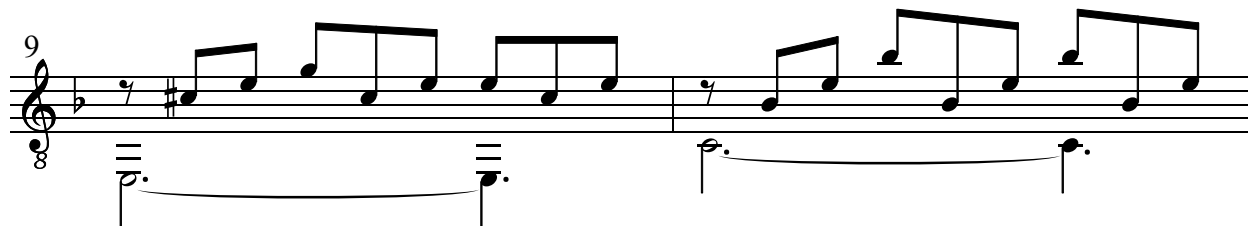
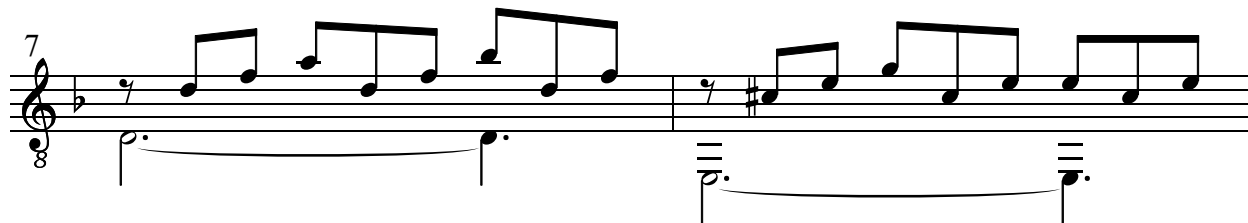
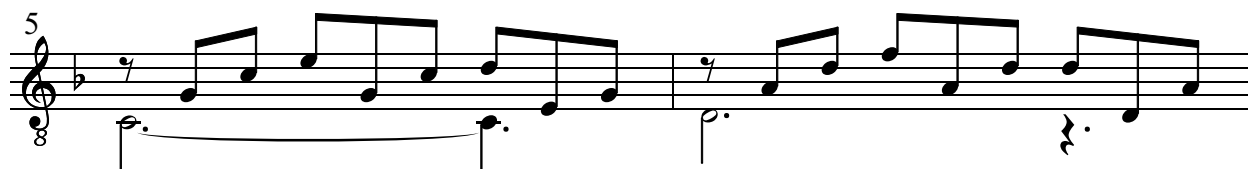
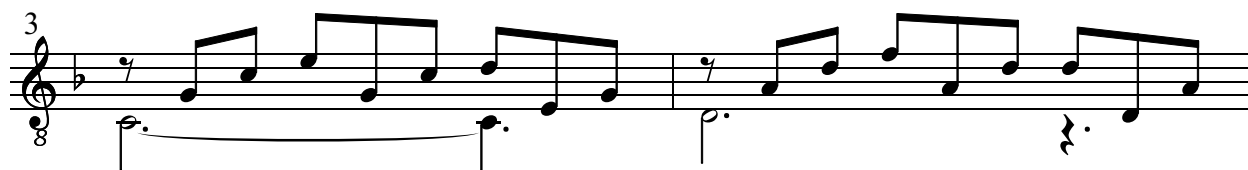
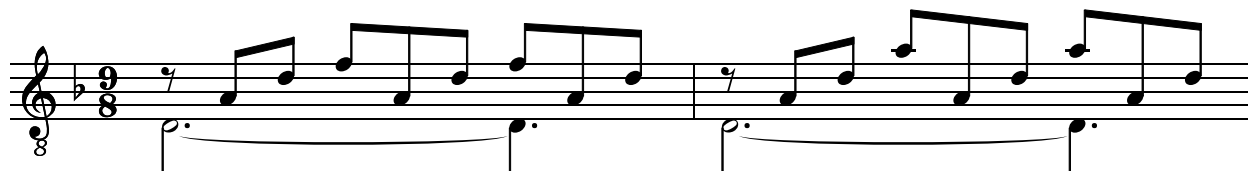


Invention Nr. 2

(Opus 157)

Thomas Gundlach
(Berlin, 2008)

Andante 



15

Musical notation for measures 15 and 16. The staff is in treble clef with a key signature of one flat (B-flat) and a time signature of 8/8. Measure 15 contains a quarter rest followed by a series of eighth notes: G4, A4, Bb4, A4, G4, F4, E4, D4. Measure 16 contains a quarter rest followed by a series of eighth notes: G4, A4, Bb4, A4, G4, F4, E4, D4. The bass line consists of a half note G3 in measure 15 and a half note F3 in measure 16.

17

Musical notation for measures 17 and 18. The staff is in treble clef with a key signature of one flat (B-flat) and a time signature of 8/8. Measure 17 contains a quarter rest followed by a series of eighth notes: G4, A4, Bb4, A4, G4, F4, E4, D4. Measure 18 contains a quarter rest followed by a series of eighth notes: G4, A4, Bb4, A4, G4, F4, E4, D4. The bass line consists of a half note G3 in measure 17 and a half note F3 in measure 18.

19

Musical notation for measures 19 and 20. The staff is in treble clef with a key signature of one flat (B-flat) and a time signature of 8/8. Measure 19 contains a quarter rest followed by a series of eighth notes: G4, A4, Bb4, A4, G4, F4, E4, D4. Measure 20 contains a quarter rest followed by a series of eighth notes: G4, A4, Bb4, A4, G4, F4, E4, D4. The bass line consists of a half note G3 in measure 19 and a half note F3 in measure 20.

21

Musical notation for measures 21 and 22. The staff is in treble clef with a key signature of one flat (B-flat) and a time signature of 8/8. Measure 21 contains a quarter rest followed by a series of eighth notes: G4, A4, Bb4, A4, G4, F4, E4, D4. Measure 22 contains a quarter rest followed by a series of eighth notes: G4, A4, Bb4, A4, G4, F4, E4, D4. The bass line consists of a half note G3 in measure 21 and a half note F3 in measure 22.

23

Musical notation for measures 23 and 24. The staff is in treble clef with a key signature of one flat (B-flat) and a time signature of 8/8. Measure 23 contains a quarter rest followed by a series of eighth notes: G4, A4, Bb4, A4, G4, F4, E4, D4. Measure 24 contains a quarter rest followed by a series of eighth notes: G4, A4, Bb4, A4, G4, F4, E4, D4. The bass line consists of a half note G3 in measure 23 and a half note F3 in measure 24.

25

Musical notation for measures 25 and 26. The staff is in treble clef with a key signature of one flat (B-flat) and a time signature of 8/8. Measure 25 contains a quarter rest followed by a series of eighth notes: G4, A4, Bb4, A4, G4, F4, E4, D4. Measure 26 contains a quarter rest followed by a series of eighth notes: G4, A4, Bb4, A4, G4, F4, E4, D4. The bass line consists of a half note G3 in measure 25 and a half note F3 in measure 26. The marking *DC.* is placed below the staff in measure 26.

27

Musical notation for measures 27 and 28. The staff is in treble clef with a key signature of one flat (B-flat) and a time signature of 8/8. Measure 27 contains a quarter rest followed by a series of eighth notes: G4, A4, Bb4, A4, G4, F4, E4, D4. Measure 28 contains a quarter rest followed by a series of eighth notes: G4, A4, Bb4, A4, G4, F4, E4, D4. The bass line consists of a half note G3 in measure 27 and a half note F3 in measure 28.